



**Tahoe Transportation**  
**DISTRICT**

**ADDENDUM #1**  
**to**

**REQUEST FOR PROPOSALS**  
**2023-001**

**Project Engineering & Environmental**  
**Services**  
**for**  
**State Route 28 North Parking, Sidewalk, and**  
**Water Quality Improvements**

**June 30, 2023**

Tahoe Transportation District  
P.O. Box 499  
Zephyr Cove, NV 89448

Please see location photos and additional Concept Design Drawings attached.

## Existing SR28 Corridor Parking Conditions





## New Recently Constructed Parking



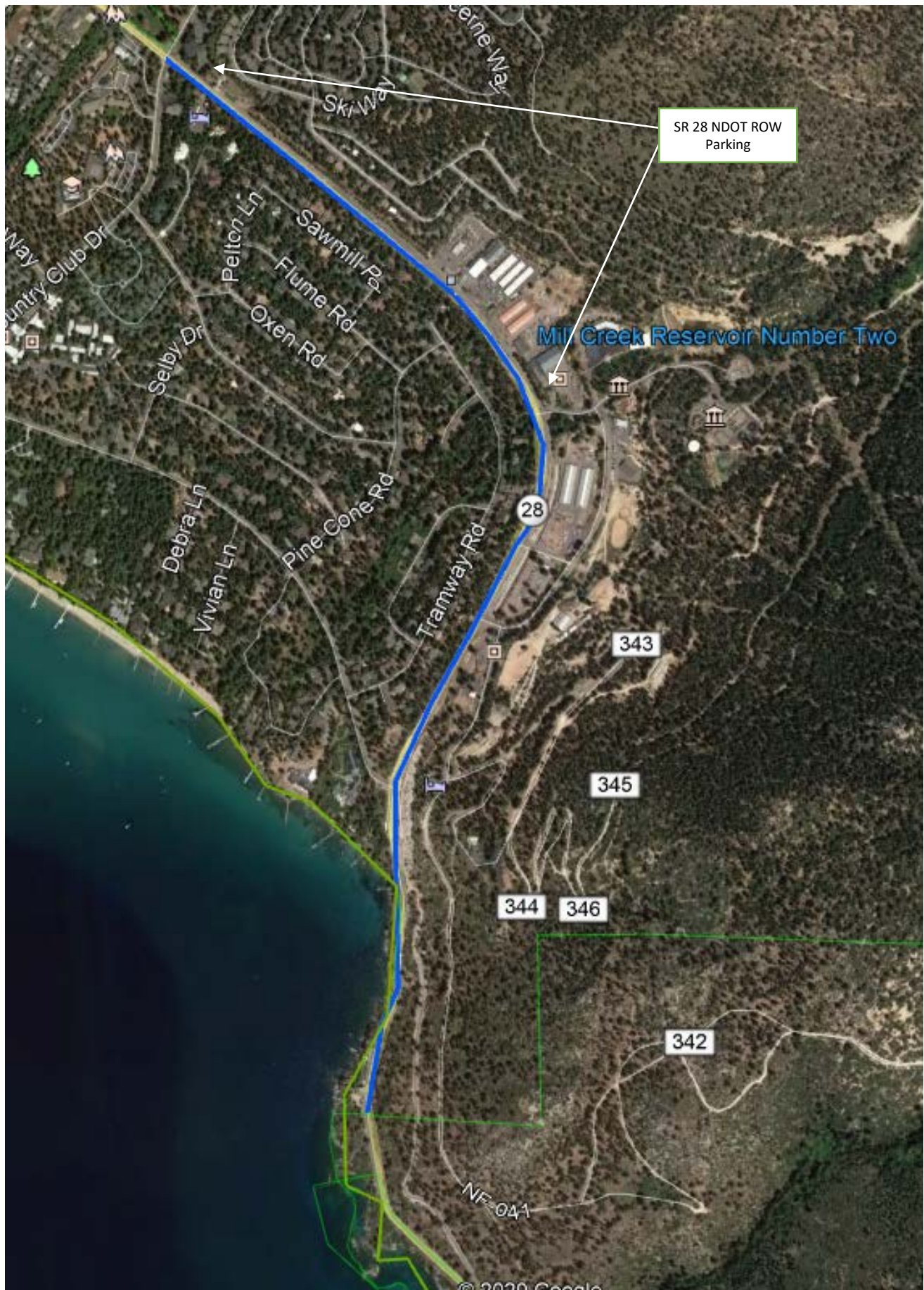


## Proposed Parking Locations





## State Route 28, Incline Village, NV

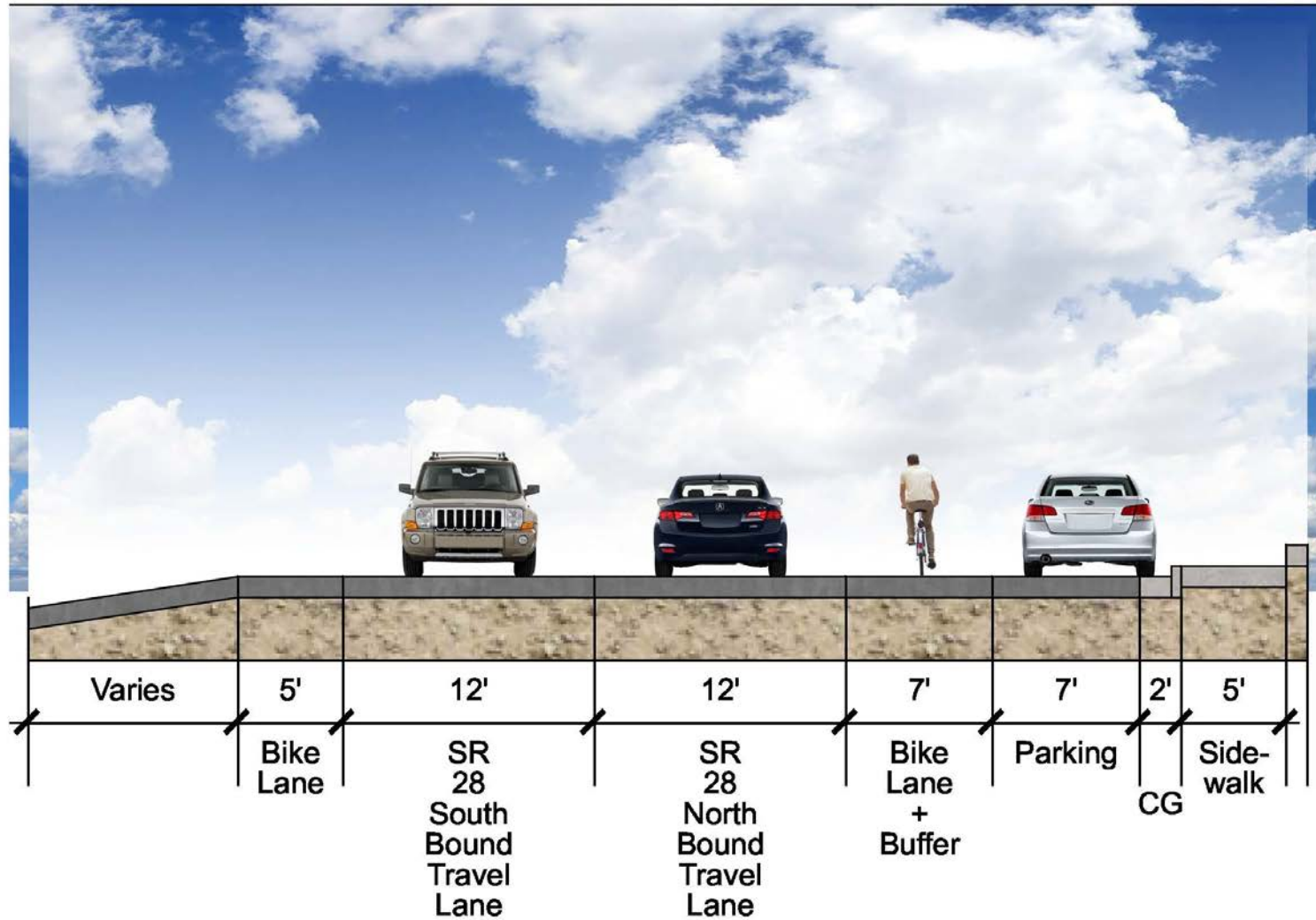






# Conceptional Parking Diagrams

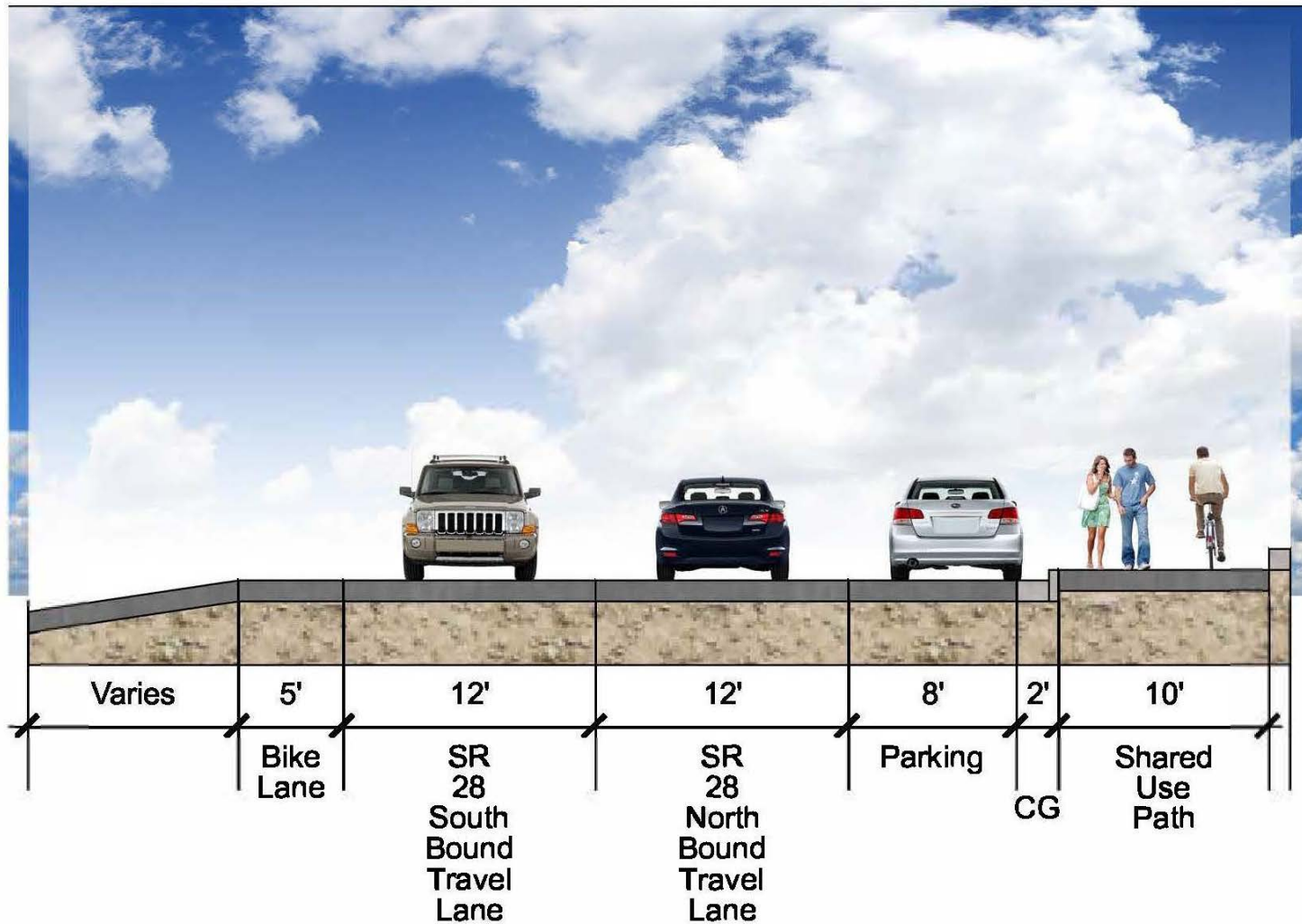
## Option A



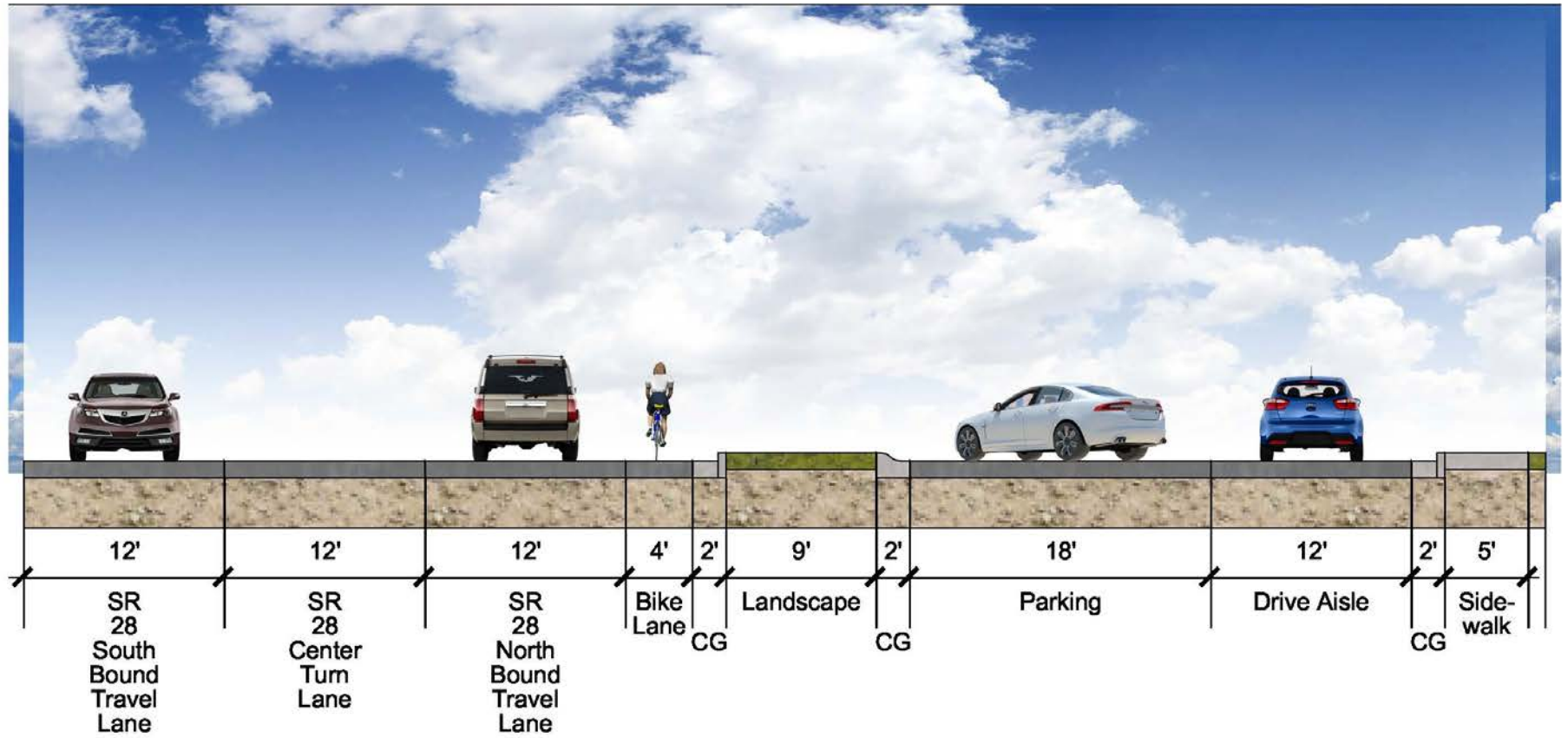
SR 28 Parallel Parking: +/- 1,400 LF (55-60 Spaces)



## Option B



SR 28 Parallel Parking: +/- 1,400 LF (55-60 Spaces)



SR 28 One Way Parking Area: +/- 950 LF (35-40 Spaces)